

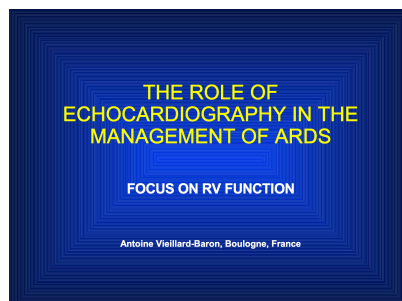
UVSQ

université PARIS-SA

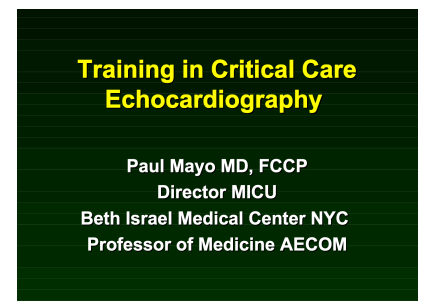
2007 - DOPPLER ECHOCARDIOGRAPHY IN INTENSIVE CARE MEDICINE



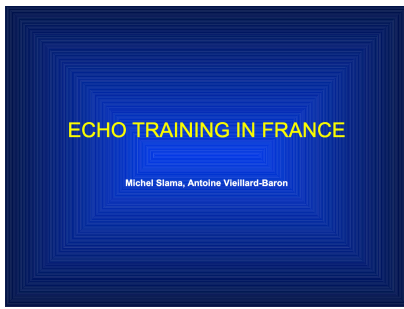
01- Echo Pattern of Acute Cor Pulmonale
Antoine Vieillard-Baron



02-The role of echocardiography in the management of ARDS
Antoine Vieillard-Baron



03-Training in critical care echocardiography
Paul Mayo



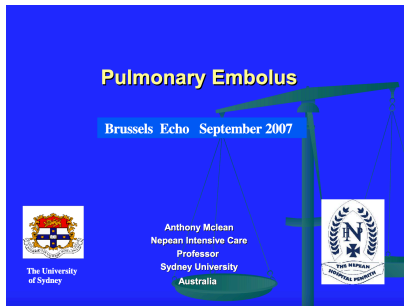
04-Echo training in France
Antoine Vieillard-Baron,
Michel Slama



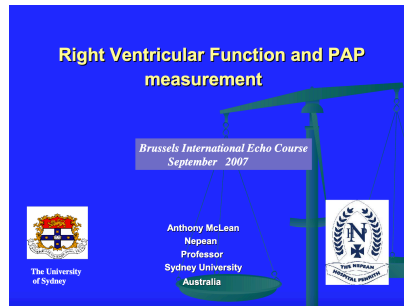
05-Heart-Lung interactions



06-Left atrial pressures



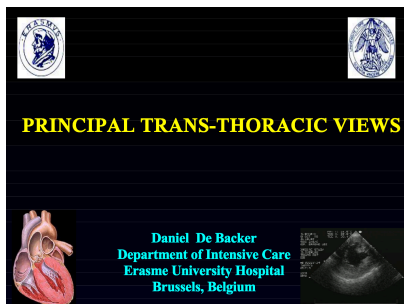
07-Pulmonary embolus



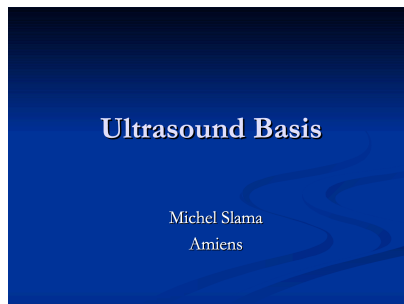
08-Right ventricular function and PAP measurement



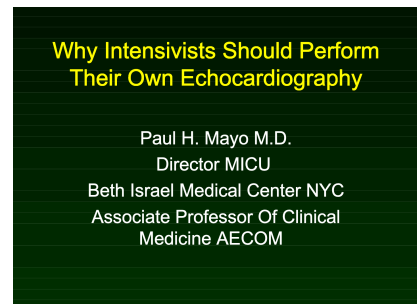
09-Transesophageal planes



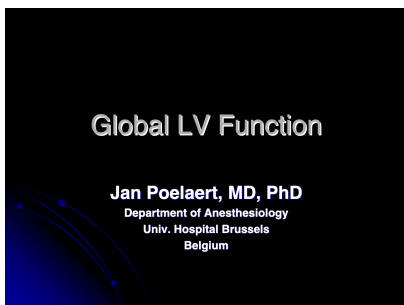
10-Principal trans-thoracic views



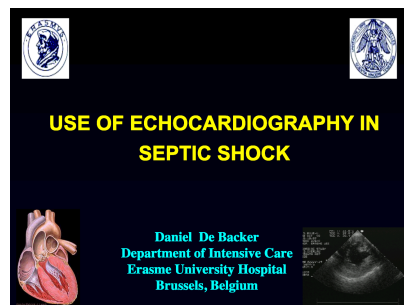
11-Ultrasound basis



12-Why intensivists should perform their own echocardiography



13-Global LV Function



14-Use of echocardiography in septic shock